



PacXcan (Australia) Pty. Ltd.

pacXcan is an Australian owned company established to Market, Implement and Support the pacXcan solution

The owners of the business are the business operators.

The Solution

pacXcan is a modern warehouse and distribution solution that was designed specifically to utilize RF technology.

pacXcan is native iSeries and is Australian developed and supported. It covers all the key areas of Warehousing and Distribution, from Purchase Orders receiving through to Invoicing/Manifesting.

pacXcan provides solutions that enables a warehouse and distribution environment to operate in a simple, efficient and cost effective manner.

pacXcan integrates smoothly with most ERP's and provides unsurpassed inventory visibility,



multiple picking variations, and electronic dispatch co-ordination with most freight carriers.

Contents

pacXcan	1
The Solution	1
The History	1
The Technology	2
Turn-key Solution	2
Adaptability	2
RF Wireless Tech-	2
Table Control	2
Growth	3
Reduction in Cost	3
Use & Training	3
Accuracy	3
Reports & Analysis	3
Support	3
Menu	3
Versatility	4
Distribution	4
Documentation	4
Key Features	5
Why use pacXcan	6

The History

Australian Weaving Mills

Commissioned first version of pacXcan in 1998 to convert paper warehouse environment to paperless.

Neat & Trim (Shared Apparel)

Installed second version of pacXcan in 2003 and still operating successfully within the Pac-Brands environment.

The Stafford Group

Converted from WIMS system to pacXcan version two in 2005 with complete transition taking only three months.

pacXcan Version 3 completed in 2010.

This includes overseas 3PL linkage and container controlling.

2012 pacXcan goes web for all existing users.



The Technology

“Deliver the right goods first time, on time, every time”

We are a provider of hi-tech Radio Frequency (RF) warehouse and distribution software solution.

pacXcan is a comprehensive paperless software solution specifically designed to utilize radio frequency technology that delivers an efficient and cost effective solution.

Deliver the right goods first time, on time, every time.



TURN-KEY SOLUTION



pacXcan is a stand-alone, turn-key solution with specified ERP interface/API link points. All the major Warehousing and Distribution requirements are satisfied within.

ADAPTABILITY



pacXcan runs in a Multi Company/Division, Brand/Range, Warehouse and Zoning environment, all of which are configurable independently.

RF WIRELESS TECHNOLOGY

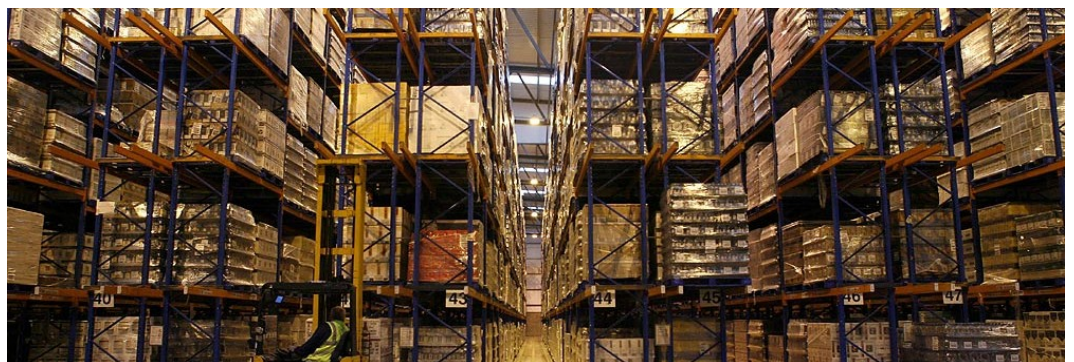


pacXcan is specifically designed to use Wireless technology and to incorporate product and location scanning, to ensure complete accuracy at all times.

TABLE CONTROLLED & DRIVEN



i.e. major configuration options can be modified by authorized personnel by accessing the appropriate table options.



pacXcan is not just software

*“High quality
imaginative
planning for the
future”*



GROWTH

As your business grows, pacXcan will easily accommodate multiple warehouses and/or multiple companies both locally and internationally.

REDUCTION IN COSTS

pacXcan reduces costs with improved pick and put-away efficiency, reduction of required stock carry levels, efficient use of warehouse storage, transport costs analysis, and reduced reporting requirements.

USE & TRAINING

pacXcan is easy to use and we provide specialized training and assist integration at all staff levels.

ACCURACY

The accuracy of the system can eliminate the need for costly stock takes and can dramatically improve your customer service levels, resulting in less required customer service complaints/calls.

REPORTS & ANALYSIS

The comprehensive reporting ability of pacXcan is an important tool for effective warehouse management and analysis of stock data.

SUPPORT

The pacXcan team offer a comprehensive support network in all areas of installation, training, product support and development, with over 30 years of warehousing data management experience.

MENU

The system has a comprehensive and easy to use Menu.
User/Option logging (Which option, when and for how long).
Ability to attach non pacXcan options.

Versatility

*“Proudly Australian
owned and
developed”*

Any RF process can be suspended at any time and, if required, restarted by a different user.

Inventory is visible at all times, even on picks or stock transfers

An Order pick can be split into several Picks assigned to different users, or one picker can pick multiple orders simultaneously

An Order pick can be cancelled at any stage, even if it's in a cluster pick.

pacXcan is self correcting in situations where a gun failed or there has been a system shut down.



Distribution

Distribution area can be split into separate Consignments, Pick up Bays, and Manifesting.

Full visibility of carton/parcel contents

Supports the latest TNT, TOLL Ipec and AP? Labels, Manifests and EDI Data processing requirements.

“On the fly” parcel creation for non- stock items to be included within a shipment/manifest.

pacXcan supports “Multi Pick up” scheduling and viewing of pickup capacity and status.

Manifesting can be by consignments or Containers (Off Shore PnP).

Documentation

pacXcan contains documentation on all files and a matrix as to where and how each file used is available within the system.

pacXcan contains extensive documented with the help key within every program and the option for users to enhance the documentation while within that program. This documentation can be printed out via Optrra Forms on the Lexmark printer in a nice manual format.

Key Features

*“Committed to
customer success
and satisfaction”*



pacXcan is a standalone, turnkey Warehouse and Distribution solution.

pacXcan supports Multi-Company, Multi-Warehouse and Multi-Brand

Soft coded tables make pacXcan adaptable to a company's individual requirements

pacXcan supports product attributes such as weight, height, length, width, which can be used for distribution and logistics planning.

pacXcan provides trigger points for automated replenishment

pacXcan offers true warehouse zoning for stock segregation and Put-Away control, picking rules can be applied at the zone level.

Picks can automatically be assigned to a Pick Wave and the applicable Wave rules applied.

Any RF task can be suspended and restarted or transferred to another user.

pacXcan identifies and provides efficient directed walk paths for picking

Orders can be picked as FIFO, LIFO, least units, closest units or next nearest location

It provides real time visibility of all inventory, whether in storage locations or “on the move” during any RF task e.g. picking, replenishment or transfers.

pacXcan offers a choice of picking control options: Discreet – One Picker, One Order, Cluster – One Picker, Multiple Orders, Group – Multiple Pickers, One Order

Supports “cross-docking” requirements, incoming stock can be picked from the “dock” without the requirement to “bin” the inventory first.

Urgent orders can be fast tracked. Any pick job can be prioritized or deferred as required.

Cycle count period ranges are managed at warehouse level

Cycle counts can be generated manually for multiple locations based on various selection rules and criteria

pacXcan provides electronic dispatch transfers to carriers and is ASN and SSCC compliant

pacXcan can be adapted to automate distribution to major retailer packing and delivery requirements

pacXcan prepares bar-coded freight labels, bar-coded consignment notes and electronic manifests

Supports freight rates by carrier/region for distribution costing purposes

pacXcan provides total history and comprehensive reporting of all transactions and provides detailed stock movement analysis with trace-and-track visibility as well as aged and slow moving stock identification

“The owners of the Business are the business operators”

Why use pacXcan

It is iSeries native and can be supported by your existing IT team.
pacXcan source code can be made available at the completion of the implementation project.

Configuration & Interfaces

It is Multi Company, Multi Warehouse, Multi Brand, there are no restrictions on the combinations and all are defined independently of each other. All are easy to set up and control

The titles “Company”, “Warehouse” and “Brand” are soft coded and can be changed globally at any time.

pacXcan users can be assigned to any combinations of Company/Warehouse./ Brand, and can move between combinations freely under a single user id.

It’s a standalone system that utilizes parameter driven API's to interface to your ERP system.

Zoning

Each Zone may have a different storage and/or access methods, Pick rules etc

A warehouse can be set up with numerous Zones to keep different type of stock segregated where necessary.

There are triggers at Zone level to automatically select locations to be Cycle Counted be it when empty, the location has been hit a certain number of times, etc.



Picking Waves

Customer Orders /Pick Slips are automatically grouped into their assigned Picking Waves.

Stock Reservation/Allocation rules are controlled at Picking Wave level - FIFO, LIFO, Least stock to empty locations. Closest fit for quick pick, Nearest next location for shorter journey.

SKU definition

SKUs are assigned a Category which defines the Items and for each category a general Weight, Height, Length and Width can be set up. This assists in evaluating Storage space in the Warehouse, Parceling and Distribution.



pacXcan (Australia) Pty Ltd

3 Queen Street
South Melbourne
Victoria, Australia 3205

Phone: +61 3 9690 8941
Mobile +61 4 1294 5754

E-mail:
roman.graczyk@pacxcan.com.au

